

LIFESPRING CHURCH

# MONTHLY NEWS

APRIL

*lifespringchurch*



## APRIL EDITION

This newsletter is our way of keeping you closely connected —sharing important dates, meaningful highlights, and the latest updates from Lifespring Church. It's more than just information; it's a glimpse into all that God is doing in and through our community, and we don't want you to miss a single moment of the journey.

We warmly invite you to take your time as you read through each section—reflect on the stories, stay informed, and be encouraged by what's unfolding. Our hope is that as you go through it, you'll feel inspired, uplifted, and even more a part of everything that lies ahead.

### SAVE THE DATES

★ **EASTER FUN - APRIL  
9<sup>TH</sup> AT 11AM**

★ **YA FREEDOM  
ENCOUNTER - APRIL 11TH**

★ **SPECIAL OFFERING  
DATE - APRIL 26TH**

★ **CORPORATE FAST  
APRIL 31TH**



JUNIOR CHURCH EASTER FUN



# YOUNG ADULTS FREEDOM ENCOUNTER



SUNDAY 11<sup>TH</sup> OF APRIL

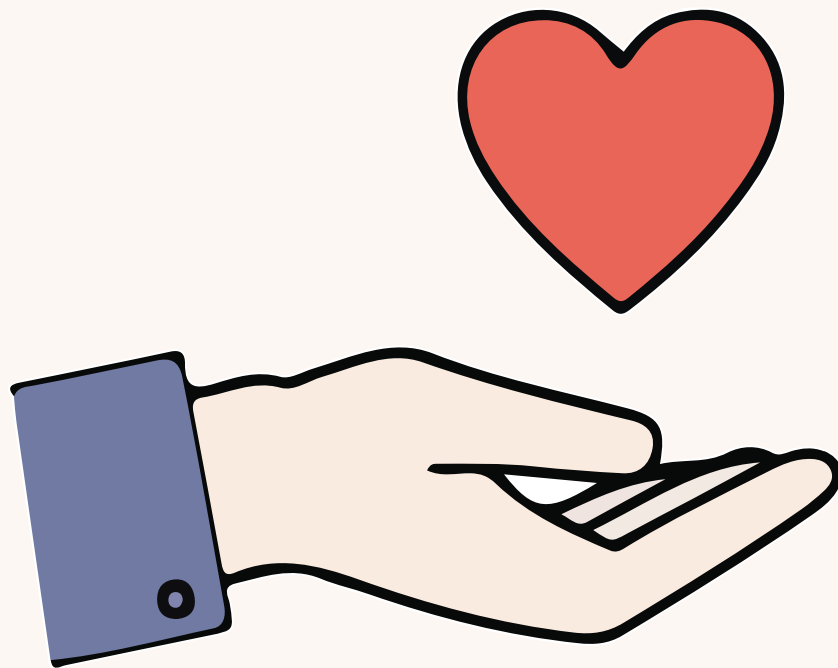
## YOUNG ADULTS FREEDOM ENCOUNTER

We are not meant to carry so many burdens from our past and mistakes. God wants to set you free in all the areas of your life. If you have been struggling and you need breakthrough, come along!

LINK TO REGISTER:

<https://lifespringchurch.churchsuite.com/events/jqrorllb>





## SPECIAL OFFERING - APRIL 29TH

We are taking up a special offering on the 26<sup>th</sup> of April to help towards repaying our circle loan, repairs to lower ground floor, and to erect a partition in the Spirit Lounge to eliminate noise from the foyer.



## CORPORATE FASTING - APRIL 30TH

It has been a great blessing to be able to fast together as a church. We have seen many miracles and answers to prayer. Do join us this April 30<sup>th</sup>. Fasting is going without food for a length of time (you determine) in order to seek God and receive from Him.

We will meet at the Pavilion on April 30<sup>th</sup>,  
Doors open 7:30pm for an 8pm start.

# EXTERNAL EVENTS

# DOMINION SEMINAR

30 APRIL - 2 MAY, 2026

READING, UK

**LifeSpring Church**

143 - 145 OXFORD ROAD,  
READING, RG1 7UY

FOR MORE INFORMATION, PLEASE  
CONTACT JOE MACANDREW



## **REGULAR EVENTS AT LIFESPING**

- **MONTHLY BIBLE STUDY**  
**(1<sup>ST</sup> SUNDAY OF THE MONTH 9:30AM)**
- **YOUNG ADULTS GROUP -**  
**MEET MOST SATURDAYS 7PM**
- **LIFEGROUPS MON-FRI**
- **PRAYER MEETINGS EVERYDAY**

**BECOME PART OF THE WHATSAPP  
COMMUNITY TO STAY TUNED! GO TO THE  
CONNECT DESK FOR MORE INFO**



# ARE YOU PART OF A LIFEGROUP?

LIFEGROUPS ARE SMALL GROUPS OF USUALLY UP TO 12 PEOPLE WHICH MEET EVERY WEEK FOR SPIRITUAL ENCOURAGEMENT AND FRIENDSHIP. THEY ARE MAINLY SINGLE SEX AND MAINLY MEET IN THE EVENINGS, BUT THERE ARE SOME MIXED AND ONLINE LIFEGROUPS YOU CAN ALSO JOIN.

LIFEGROUPS AIM TO PROVIDE PASTORAL CARE, FRIENDSHIP AND SUPPORT, DISCIPLESHIP AND SPIRITUAL GROWTH.

WE ENCOURAGE EVERYONE TO BE PART OF A LIFEGROUP.

IF INTERESTED OF JOINING ONE, PLEASE GO TO OUR CONNECT DESK BY THE ENTRANCE OF THE PAVILION OR SEND US A MESSAGE ON:  
[ADMIN@LIFESPRINGCHURCH.ORG.UK](mailto:ADMIN@LIFESPRINGCHURCH.ORG.UK) OR CONTACT US 01189839080



**WE HAVE WOMEN - MEN - YOUTH AND MIXED LIFEGROUPS.  
PLEASE SEE IN THE NEXT PAGE THE LIST OF GROUPS WE HAVE.**



# WOMEN GROUPS - LEADERS & LOCATIONS

MONDAY 6:15PM	GERALDINE DUBBER	THE PAVILION
MONDAY 7PM	SAM WIGGINS	THE PAVILION
MONDAY 7:45PM	CAROLINE THOMAS	TILEHURST
MONDAY 8PM	HEATHER PLUMLEY	EARLEY
TUESDAY 11AM	HEATHER HERRING	THE PAVILION
TUESDAY 4:30PM (PLUS CHILDREN)	LAUREN LANE	THE PAVILION
THURSDAYS 12:30PM	LOUISE CROSS	THE PAVILION
TUESDAY 6:30PM	SARAH LAWRENCE	SOUTHCOTE
TUESDAY 7:45PM	CATHERINE MATTHEWS	WEST READING
TUESDAY 7:45PM	KATE PIERCE	WEST READING
TUESDAY 7:30PM	LISA HOLLANDS	THE PAVILION
WEDNESDAY 11AM	EGLAH GIDEON	THE PAVILION
WEDNESDAY 6:30PM YOUNG ADULT GIRLS	ANGELINE DZIYA   GERALDINE GRAY	THE PAVILION
WEDNESDAY 7:45PM	RUTH BOYS	TILEHURST
TUESDAYS 7:30PM	NATALIE PREVILLE	CENTRAL READING



## MEN GROUPS - LEADERS & LOCATIONS

MONDAY 7PM	CHRIS WIGGINS	THE PAVILION
MONDAY 7:30PM	IAN PLUMLEY	WEST READING
TUESDAY 7PM	GABRIEL HERRING	SOUTHCOTE
FRIDAY 4:30PM (YOUTH)	JACOB BUDD	THE PAVILION
TUESDAY 8PM	QUENTIN GRAY	CENTRAL READING
TUESDAY 8PM	CRAIG LAWRENCE	SOUTHCOTE
TUESDAY 7:30PM	JAMES BURNHAM	SOUTHCOTE
TUESDAY 8PM	JAMES HOLLANDS	THE PAVILION
TUESDAY 8PM	JONATHAN KIDD	TILEHURST
WEDNESDAY 7:30PM	JULIAN FERNANDO	BURGHFIELD
MONDAY 7:45PM	JACOB BUDD	SOUTHCOTE
MONDAY 8PM	JAMES ROSSER	TILEHURST



## MIXED LIFE GROUP

MONDAY 7:45	PAUL AND LORNA SHEPHERD	CALCOT
WEDNESDAY 7:30PM	SAM OWOO & HEATHER	THE PAVILION

## ZOOM LIFE GROUP

WEDNESDAY	DEBS & JAMES BURNHAM	WEDNESDAYS   ZOOM
-----------	-------------------------	-------------------



# JUNIOR CHURCH'S NEWSLETTER

## SCRIPTURES FOR THIS TERM:

Matthew 13:8  
Luke 4:2-4

## WHATS HAPPENING THIS MONTH?

In March, we will be looking at the Parable of the Sower.

In April, learning about fasting and practising creative prayer.

## QUESTIONS:

1. Why did Jesus speak in Parables?
2. What is fasting?

# VOLUNTEERING AT LIFESPRING

**LIFESPRING IS ALWAYS NEEDING VOLUNTEERS TO SERVE ON SUNDAYS OR DURING THE WEEK. IF YOU WOULD LIKE TO HELP, PLEASE VISIT OUR CONNECT DESK ON SUNDAYS OR GO TO**

**<https://lifespringchurch.churchsuite.com/-/forms/7ctdxfh8>**

CAFE 12	COFFE ON STEPS	CAMERA*
RENEW CAFE 12	MEDIA TEAM*	SOUND*
RECEPTION/ SECURITY	WELCOMING TEAM*	VISUALS*
THE PANTRY	SECURITY TEAM*	SETTING UP*
LITTLE BLESSINGS	REFRESHMENTS TEAM*	CLEARING AWAY*
3:16 CLUB	JUNIOR CHURCH*	FRIDAY CLUB

**\*\* THE ONES WITH ASTERISCS ARE ON SUNDAY- THE OTHER ONES ARE ON DURING THE WEEK  
for more info, please go to the connect desk**

# Finance Summary

## Financial summary – February 2026

**Our total general income for February was £38,473 which includes tithes & offerings of £26,943 & Gift Aid of £4,953.**

**Our expenditure for same period was £38,386, including £26,289 employment costs**

**Surplus for month - £87.**

**We need to repay a loan of £500,000 in 2028 used to refurbish The Circle. We have £355,103 saved towards this repayment but if you would like to contribute to help us clear this fund, please email Marion or speak to Luke or Nev.**



# Gift Aiding

**If you are a UK tax payer, please consider Gift Aiding your donations. We can claim back 25% of your contributions at no extra cost to yourself. Contact [marion@lifespringchurch.org.uk](mailto:marion@lifespringchurch.org.uk) for more information.**

**You can do so by filling the following form:  
<https://lifespringchurch.churchsuite.com/-/forms/fn7bbygy> or  
by completing an envelope on a Sunday.**

**If you are giving and your legal name is different to your preferred name please write both in capitals on any forms.**

**Thank you so much for your generosity!!**



# DO YOU WANT TO BLESS YOUR CHURCH?



## 3 WAYS TO GIVE

01

### Scan the QR Code

Open your camera or QR code scanning app and point it at the code below.

02

### Online by BACS

LifeSpring Church: 40-38-04: 84467582

03

### Envelope for Cash Payments

**THANK YOU FOR YOUR GENEROSITY!!**



**LIFESPINGUK**



**LIFESPING CHURCH READING**



**WE ALSO HAVE SOCIAL MEDIA!!**

**PLEASE FOLLOW US :)**

# NEW BUSINESS LAUNCH FROM OUR LIFESPRING MEMBERS


MOVE IN FREEDOM  
WORSHIP DANCE FITNESS WITH STEPH




## + FAITH + FITNESS + FREEDOM +

Join our uplifting dance fitness sessions where movement becomes worship. Celebrate joy, strength and spiritual renewal through high energy routines set to your favourite praise and worship music.

- 45 MINUTE SESSIONS
- SUITABLE FOR ALL LEVELS
- FAITH - FILLED ATMOSPHERE
- THE PAVILION, LIFESPRING CHURCH
- FRIDAYS 1PM - 1:45PM
- WEDNESDAYS 6PM - 6:45PM
- £5 PER SESSION OR  
5 CLASS PASS FOR £20

 @move.infreedom

 moveinfreedomwithsteph@gmail.com

“Let them praise His name with dancing” Psalm 149:3